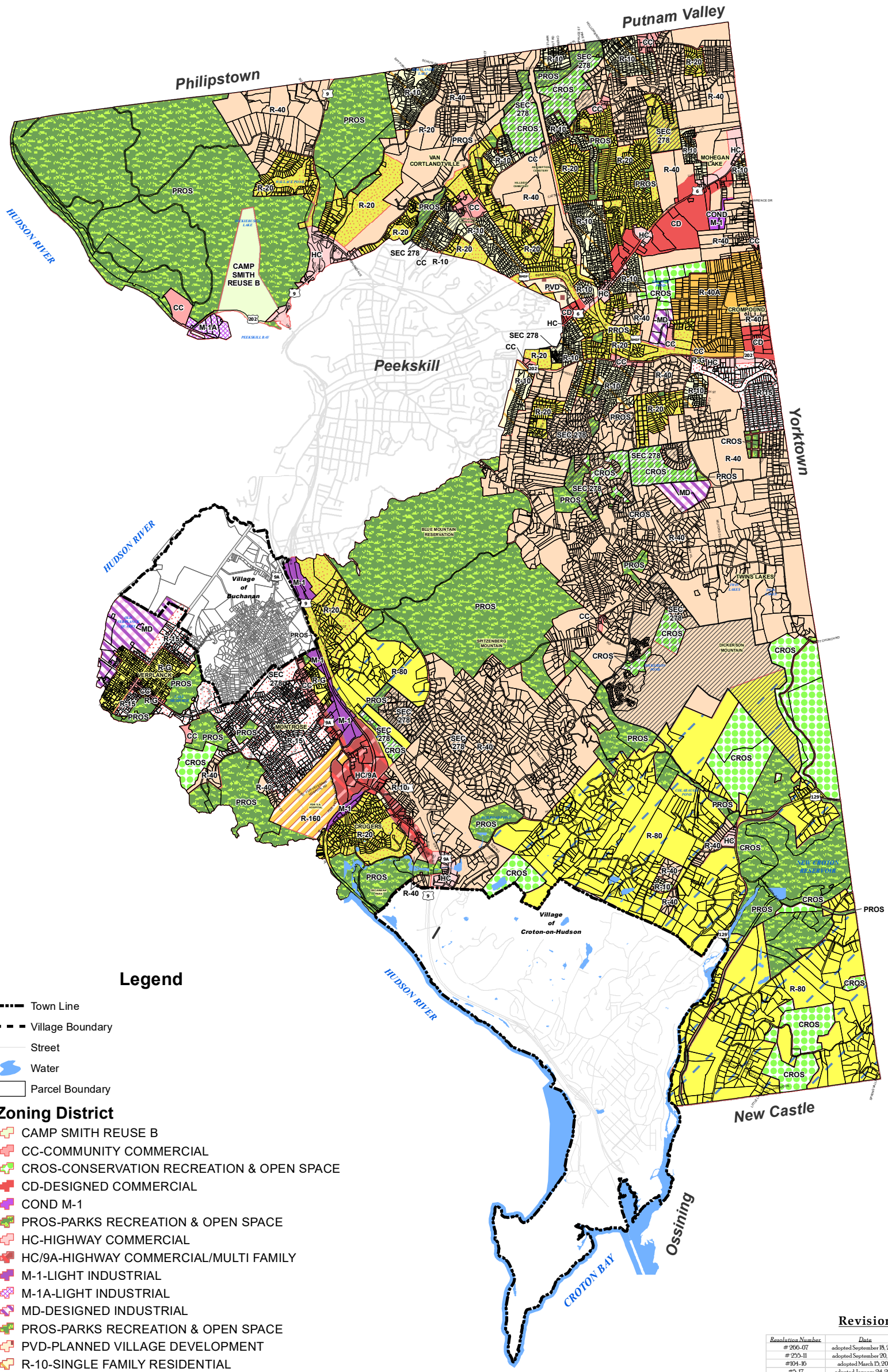




Town of Cortlandt

Zoning Map



Legend

- Town Line
 - Village Boundary
 - Street
 - Water
 - Parcel Boundary
- Zoning District**
- CAMP SMITH REUSE B
 - CC-COMMUNITY COMMERCIAL
 - CROS-CONSERVATION RECREATION & OPEN SPACE
 - CD-DESIGNED COMMERCIAL
 - COND M-1
 - PROS-PARKS RECREATION & OPEN SPACE
 - HC-HIGHWAY COMMERCIAL
 - HC/9A-HIGHWAY COMMERCIAL/MULTI FAMILY
 - M-1-LIGHT INDUSTRIAL
 - M-1A-LIGHT INDUSTRIAL
 - MD-DESIGNED INDUSTRIAL
 - PROS-PARKS RECREATION & OPEN SPACE
 - PVD-PLANNED VILLAGE DEVELOPMENT
 - R-10-SINGLE FAMILY RESIDENTIAL
 - R-15-SINGLE FAMILY RESIDENTIAL
 - R-20-SINGLE FAMILY RESIDENTIAL
 - R-40-SINGLE FAMILY RESIDENTIAL
 - R-40A-SINGLE & TWO FAMILY RESIDENTIAL
 - R-80-SINGLE FAMILY RESIDENTIAL
 - R-G-GENERAL RESIDENTIAL
 - R-160 RESIDENTIAL
 - SEC 278-CLUSTER SUBDIVISION

Revisions:

Resolution Number	Date	Location
# 266-07	adopted September 19, 2007	Various
# 223-11	adopted September 20, 2011	Railroad Pond
#104-16	adopted March 15, 2016	3144 E. Main St (Cortlandt Crossing)
#5-17	adopted January 24, 2017	Ren Hook

Zoning Map Approved by the Town Board, Town of Cortlandt by Resolution No. 84-07 adopted on February 26, 2007.

Linda D. Puglisi
Linda D. Puglisi, Supervisor

Joann Dyckman
Joann Dyckman, Town Clerk

1 inch = 5,000 feet



North American Datum 1983 US State Plane New York East

Town of Cortlandt
Westchester County, New York